

# Welcome to Aston University and Careers and Placements

EXCELLENT  
DIFFERENT  
DISTINCTIVE  
**ASTON**



## Contents

- ▶ About Aston University
- ▶ Welcome from Professor Alec Cameron, Vice Chancellor & Chief Executive
- ▶ University values and staff expectations
- ▶ About Careers and Placements

Founded in 1895 and a University since 1966, Aston is a long established research-led University known for its world-class teaching quality and strong links to business and the professions. Professor Alec Cameron became Vice Chancellor of the University in 2016, building on a strong legacy left by the Baroness Brown of Cambridge.

### Outstanding graduate employability

Aston has been a leading university for graduate employment success for over 25 years. More than 80% of Aston graduates go on to a graduate level job within six months. The majority of Aston students choose to take an integrated placement year or year abroad, making them very attractive to employers. We have strong relationships with national and international graduate employers, as well as smaller and local employers. These relationships are extremely important and make a real contribution to graduate employability.

### Career focussed programmes

Aston's close and established links with business, the public sector and the professions ensure that our career focussed degree programmes are inspiring, challenging and constantly updated to equip students with essential work-related skills and experiences.

### Excellence in teaching and research

We are committed to high quality teaching and academic excellence, ensuring we provide the highest standard of education to our students. Aston has an excellent reputation for research which shapes and improves lives. We're proud of the quality of our research and the real world applications developed as a result – it makes a substantial and beneficial difference to people, organisations and society.

Aston's four academic Schools offer a range of undergraduate and postgraduate degree programmes, and also work with the public and private sectors to develop tailored Foundation Degree programmes.

### International

Aston University is a popular choice for international students. We recognise and welcome the important academic contribution and cultural diversity international students bring to our university environment. Students from over 120 countries study at Aston University each year

Aston University is ranked 29th in the world and 9th in the UK as one of the 'most international universities in the world.' (The Times Higher World University Ranking, 2016-17).

### Birmingham – one of Europe's liveliest cities

Birmingham is internationally recognised as a leader in leisure, entertainment, shopping and sport. It is an international centre for business, commerce and industry, housing numerous UK and overseas banks and law firms. Birmingham attracts 25 million visitors each year and contributes billions to the national economy through manufacturing and engineering.

The University campus is located in the city centre making it very accessible to an extensive network of motorways and railways.

### A green, sustainable campus

Located in the heart of a vibrant city, our 40 acre campus houses all the University's academic, social and accommodation facilities for our 14,355 students. All staff have the opportunity to contribute to our sustainability agenda and practices.



## Welcome from Professor Alec Cameron, Vice Chancellor & Chief Executive

### Dear applicant

The HE sector is currently experiencing an unprecedented scale and pace of change, combined with a high degree of ambiguity and uncertainty. Those universities able to adapt swiftly to a changing and increasingly competitive market will thrive. As a mid-sized, focused university Aston has the advantages of agility, innovation and team working that some other institutions do not. Our integrated placement year, our applicable, exploitable research, and our commitment to widening participation all help to make Aston distinct.

The 2014 Research Excellence Framework results recognised the quality and impact of Aston research. This research directly influences medical breakthroughs, advancements in engineering, innovation, policy and practice in government, and the strategies and performance of local and international business. The Times Higher Education REF rankings placed Aston University 35th in the UK and 78% of our submissions were judged to be World Leading or Internationally Excellent.

Teaching quality and the student experience are an important focus at Aston. We are committed to doing all we can to address the needs of students and to assisting them to achieve their career ambitions on graduation.

We very much look forward to receiving your application and learning more about how you would contribute to Aston's continuing success.

A handwritten signature in blue ink that reads "Alec Cameron." The signature is written in a cursive, flowing style.

**Professor Alec Cameron**  
Vice Chancellor & Chief Executive



## ► University values

All staff are expected to demonstrate / promote the University's values and expectations, which are an integral part of our 2020 strategy and underpin the culture of the University. Our vision is to be the UK's leading University for business and professions, where original research, enterprise and inspiring teaching deliver global impact. More information about the university's values is available at [www.aston.ac.uk/staff/working/dare-to-succeed/values/](http://www.aston.ac.uk/staff/working/dare-to-succeed/values/)

In addition, our leaders are expected to be accountable, help to execute strategic visions of the University, share and set clear expectations that inspire those around them. Further information on our leadership expectations can be found at: <http://www.aston.ac.uk/EasySiteWeb/GatewayLink.aspx?allid=158042>



## ► Staff expectations

All staff are expected to;

- Be committed to delivering high performance
- Recognise and praise the high performance of others
- Remain open to new ideas and seek to act quickly for positive change
- Develop themselves, and support the development of others
- Be ambitious, for themselves, their teams and the university
- Engage with others, listen, observe and communicate
- Focus on excellent customer service, finding solutions and saying “yes”
- Make reasoned decisions without fear of blame
- Engender trust through their own actions
- Be fair in all matters

## ► Careers + Placements

At Aston University, employability is a key element of our 2020 strategy. We believe the placement year drives our excellence in employability. The University has a **five star rating by QS for excellence in employability**. However, competition in the sector is fierce so to protect our heritage USP we cannot rest on our laurels. At present over 70% of Aston undergraduates opt for a placement as part of a four year programme, our key strategic objective is to achieve 100% take-up of placements by 2020, with over one third of those students undertaking their placement overseas. The placement year provides the perfect opportunity for our students to develop practical experience enabling them to go on and achieve excellent careers once they graduate.

### Student & Employer Engagement Team

Established by the employers of Birmingham in 1895 to meet their changing skills needs, Aston University has never forgotten that strong employer relationships are part of the equation when it comes to successful employability. Our partnerships with industry at a local, national and international level help us to develop work-ready graduates and entrepreneurs, to establish relevant degrees many of which are professionally accredited and to deliver cutting edge research with impact.

**The Student Engagement Team** leads on our innovative student communications. The team are responsible for promoting the wide range of Careers+Placements services available to students and graduates as well as publicising the recruitment activities and opportunities of our employers to ensure Aston's students are informed and engaged.

In order to achieve our strategic objectives, and enable us to offer an exceptional experience to our students and employers the Student & Employer Engagement Team works closely with the Careers Team, Student Support Team and the International Projects and Business Development Team.

**The Employer Engagement Team** works across both the Careers & Placements teams offering a single point of contact for employers from all sectors and industries to engage with Aston University for recruitment activities. The team are responsible for generating graduate and placement opportunities, offering a consultative approach to businesses and account managing relationships with employers both locally and nationally.

**Graduate Advantage** is the UK's longest running and largest Higher Education Institution Partnership of its kind, currently led by Aston University in collaboration with Birmingham City University and Coventry University. Since 2003 Graduate Advantage has supported over 4000 graduates into employment. With a specialism of supporting small to medium sized enterprises (SMEs) its purpose is to transform the attitudes of organisations towards graduate employment and of graduates towards working within small, high growth businesses.

### Careers Team

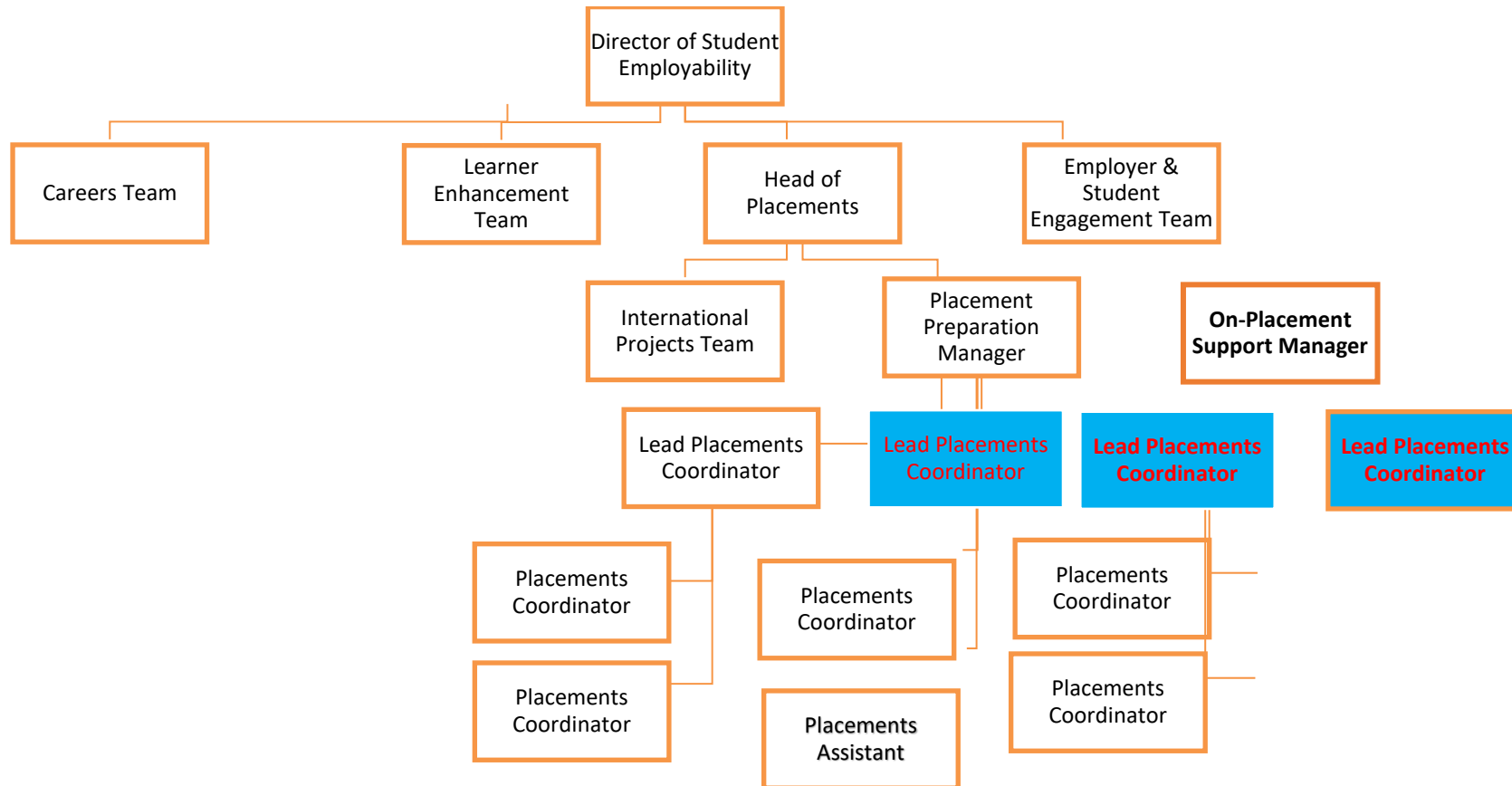
**The Careers Team** works with students from their first year right through to graduation and for up to 3 years beyond. The team play an active role in preparing them for work experience, internships, and their placement year to effectively compete for graduate roles and further study. Each School has a link advisor that supports curriculum development ensuring employability is securely at the heart of their learning.

### Placements Team

**The Student Support Team** provides a programme of support for students to maximise their success in their placement search and whilst on placement. Each School has a dedicated Placement Coordinator who provides students with the most relevant placement information for their degree programme.

**The International Projects and Business Development Team** focuses on key projects to increase the quality and number of international placements and graduate opportunities for all schools of study. It provides support to employers based abroad, as part of the recruitment process, together with managing the administration of international mobility grants like Erasmus and Santander. The team also administers the Study Abroad placement process and liaises with overseas partner universities.

## Organisational Structure



**Aston University**  
**Employable Graduates**  
**Exploitable Research**

Aston University  
Birmingham B4 7ET

[www.aston.ac.uk](http://www.aston.ac.uk)